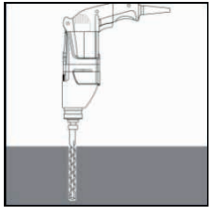


Drill

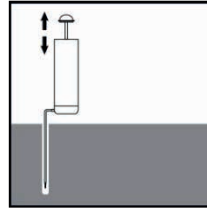


Drill hole in the asphalt to the required diameter and embedment depth using the appropriate size drill bit. (see table below for specification)

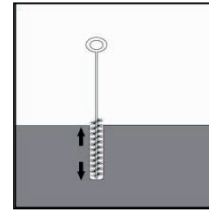
If hammer drilling, the hole must be thoroughly cleaned to ensure it is free of dust and debris before setting an anchor.

Hole cleaning

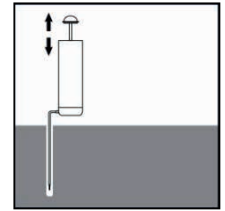
A **manual blow out pump** can be used for blowing out drilled holes.



Blow out at least 4 times from the bottom of the drilled hole.



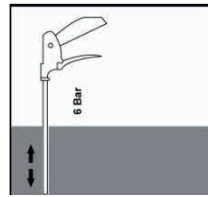
Brush 4 times with the specified brush size (see table below) by inserting the wire brush to the bottom of the hole in a twisting motion and remove the debris.



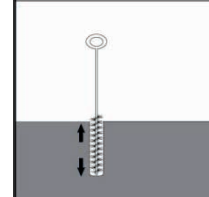
Blow out again with pump at least 4 times.

OR

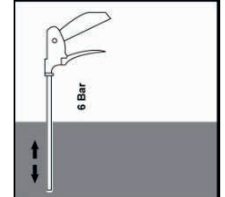
Clean with **compressed air**.



Blow twice from the bottom of the hole over the whole length with oil-free compressed air (min. 6 bar at 6 m³/h).



Brush twice with the specified brush size by inserting the steel brush to the bottom of the hole in a twisting motion and remove the debris.



Blow out again with compressed air at least **twice**.

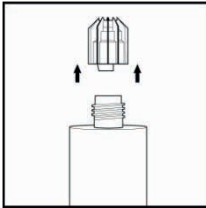
Hole cleaning - required brush sizes

If hammer drilling, the hole must be thoroughly cleaned to ensure it is free of dust and debris before injecting the resin. The table below specifies drill hole and hole cleaning brush diameter required for each PRO V asphalt anchor.

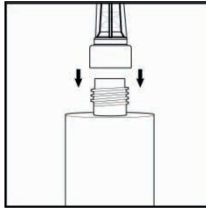
Item Code	Description	Internal thread diameter	Anchor external diameter	Anchor length	Drill hole diameter	Drill depth	Brush diameter (mm)	Brush item code
PROVAA1070	Asphalt anchor M10x70	10mm	12mm	70mm	14mm	75mm	16mm	BRUSH16
PROVAA10100	Asphalt anchor M10x100	10mm	12mm	100mm	14mm	105mm	16mm	BRUSH16
PROVAA1270	Asphalt anchor M12x70	12mm	14mm	70mm	16mm	75mm	20mm	BRUSH20
PROVAA12100	Asphalt anchor M12x100	12mm	14mm	100mm	16mm	105mm	20mm	BRUSH20
PROVAA16125	Asphalt anchor M16x125	16mm	20mm	125mm	22mm	130mm	25mm	BRUSH25



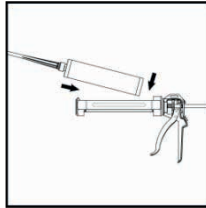
Inject



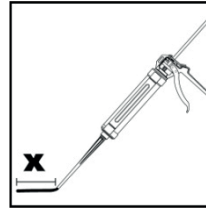
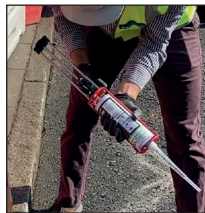
Remove the threaded cap from the resin cartridge.



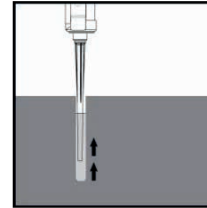
Tightly attach the mixing nozzle. Do not modify the mixer in any way. Make sure the mixing element is inside the mixer. Use only the supplied mixer.



Insert the cartridge into the V200 resin dispenser (10:1).



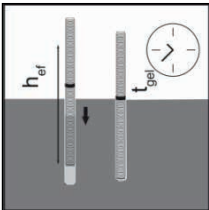
Discard the initial 2 or 3 trigger pulls of resin, until resin appears uniformly mixed.



Inject the resin starting at the bottom of the hole, slowly withdrawing the mixer with each trigger pull. Fill the hole approximately 2/3 full, to ensure that the gap between the anchor and the base material is completely filled with resin along the embedment depth.



Install



Before use, verify that the PROV asphalt anchor is dry and free of contaminants.

Insert the plastic cap into the end of the asphalt anchor and use this to twist the asphalt anchor into the resin until flush with the base material, before the **gel working time** has elapsed.

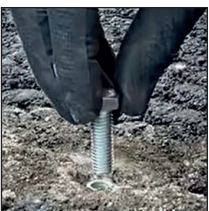
(see gel and minimum curing times in table opposite)



Base material temperature	Gel working time	Minimum curing time in dry concrete	Minimum curing time in wet concrete
-10°C *	50 min	240 min	x2
-5°C *	40 min	180 min	x2
5°C	20 min	90 min	x2
15°C	9 min	60 min	x2
25°C	5 min	30 min	x2
35°C	3 min	20 min	x2

Full cure 24 hours
All specifications based on supplied mixer
* resin temperature must be at least 20°C

Fix



The asphalt anchor can be loaded after the required resin **curing time** has elapsed.