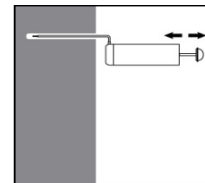
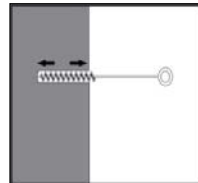
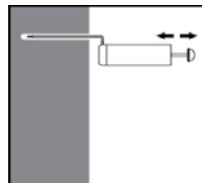
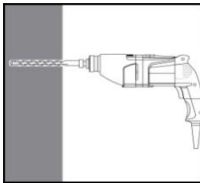


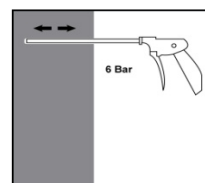
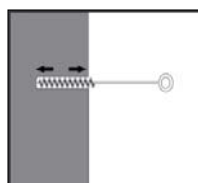
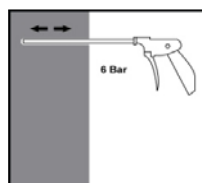
PRO V500 PURE EPOXY RESIN TECHNICAL DATA

Installation parameters: drilling, hole cleaning and installation

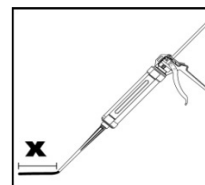
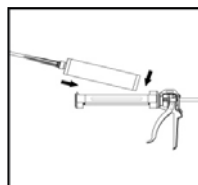
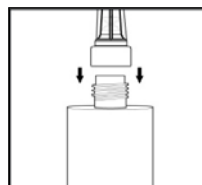
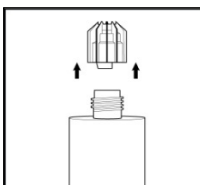


Drill hole in the substrate to the required embedment depth using the appropriate size drill bit. Clean the hole -see instructions below. Before setting an anchor, the drilled hole must be free of dust and debris. A blow out pump must be used for blowing out drilled holes up to diameters $\leq 24\text{mm}$ and embedment depths up to $10 \times$ drilled hole diameters. Blow out at least four times from the back of the drilled hole, using an extension nozzle if needed. Brush 4 times with correct steel brush size by inserting the steel brush to the back of the hole (if needed with an extension) in a twisting motion and remove debris. Blow out again with manual pump at least 4 times.

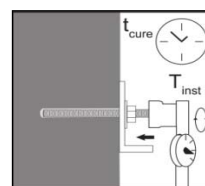
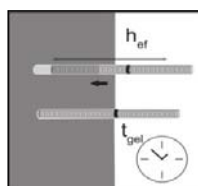
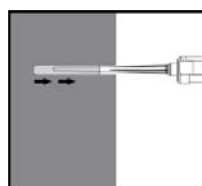
Cleaning with compressed air is suitable for all drill hole diameters and depths



Blow twice from the back of the hole (if needed with a nozzle extension) over the whole length with oil-free compressed air (min. 6 bar at $6 \text{ m}^3/\text{h}$). Brush twice with the correct brush size by inserting the steel brush to the back of the hole (if needed with an extension) in a twisting motion and remove the debris. Blow out again with compressed air at least twice.



Remove the threaded cap from the cartridge. Tightly attach the mixing nozzle. Do not modify the mixer in any way. Make sure the mixing element is inside the mixer. Use only the supplied mixer. Insert the cartridge into the dispenser gun. Discard the initial trigger pulls (10ml) of resin.



Inject the resin starting at the back of the hole, slowly withdrawing the mixer with each trigger pull. Fill holes approximately $2/3$ full, to ensure that the annular gap between the anchor and the concrete is completely filled with resin along the embedment depth. Before use, verify that the threaded rod is dry and free of contaminants. Install the threaded rod to the required embedment depth before the working gel time t_{gel} has elapsed. The working time t_{gel} is shown in the Minimum Curing Time table on Page 15. The anchor can be loaded after the required curing time t_{cure} (see Page 15). The applied torque shall not exceed the maximum value T_{max} given in table on Page 2.