



PRO V ASPHALT ANCHOR

The **PRO V** asphalt anchor system combines a traditional screw in type anchor with the benefits of modern, high performance, chemical anchoring technology.

The system has been designed and developed to be used in conjunction with **PROV200** injection resin. It is a fast, easy and safe to use fixing solution in asphalt and other base materials, which allows the fixture to be secured and removed as often as required.

Please contact us for more information on **01704 897015** or visit www.proventure.co.uk

BENEFITS

- **VERSATILE**
fix securely into asphalt and other base materials
- **STRENGTH**
high performance loads up to 15kN in recent tests
- **REUSE**
fixture can be removed and replaced
- **FLEXIBLE**
sizes to suit various applications
- **RESILIENCE**
high chemical and water resistance
- **INSTALLATION**
no expansion stress in the base material
- **SPEED**
smaller holes when compared to traditional fixings



size	hole diameter	drill depth	internal thread length
M10 x 70mm	14mm	75mm	20mm
M10 x 100mm	14mm	105mm	20mm
M12 x 70mm	16mm	75mm	20mm
M12 x 100mm	16mm	105mm	20mm

APPLICATIONS

- fencing
- parking barriers
- bollards
- speed bumps
- parking protection
- shelters
- edge protection
- playgrounds
- road signs



INSTALLATION

1 DRILL



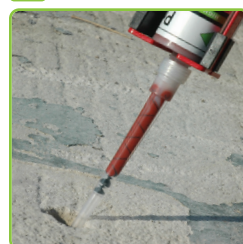
drill hole to correct diameter and depth

2 CLEAN



clean the hole thoroughly using a hole cleaning pump and wire brush

3 INJECT



fill the hole 2/3 full with **PROV200** injection resin

4 INSERT



twist the **PRO V** asphalt anchor into the resin to remove air until flush with the base material

5 USE



after the curing period the **PRO V** asphalt anchor is ready for use