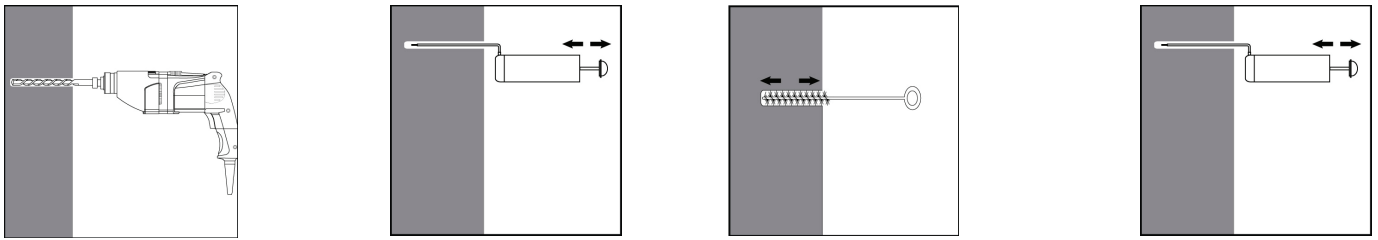
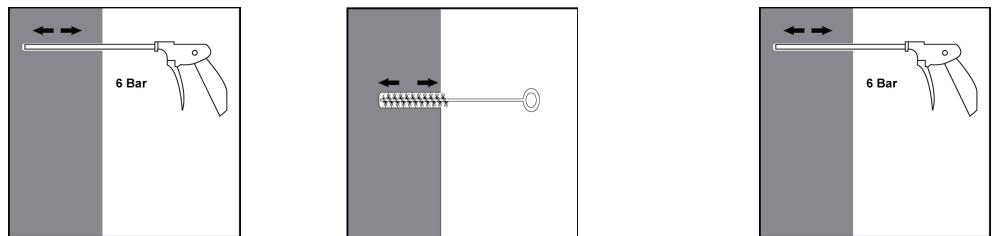


Installation parameters: drilling hole, cleaning and installation

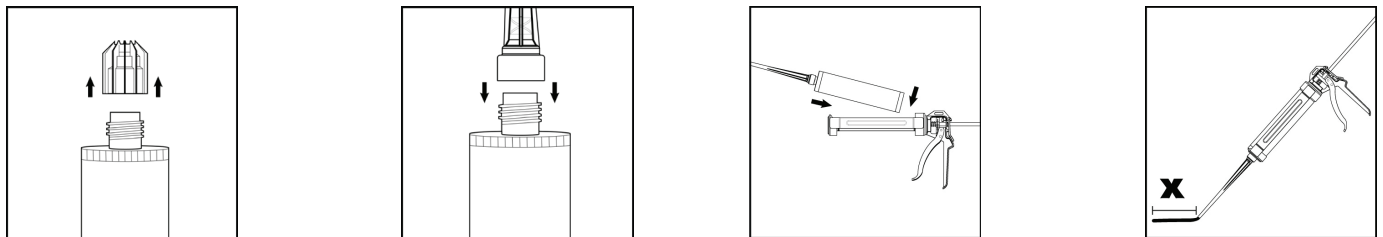


Drill hole in the substrate to the required embedment depth using the appropriate size drill bit.  
 Clean the hole. Before setting the PRO V Asphalt anchor, the drilled hole must be free of dust and debris.  
 A blow out pump must be used for blowing out the drilled hole.  
 Blow out at least 4 times from the back of the drilled hole.  
 Brush 4 times with the 16mm brush by inserting the brush to the back of the hole in a twisting motion and remove the debris.  
 Blow out again with pump at least 4 times.

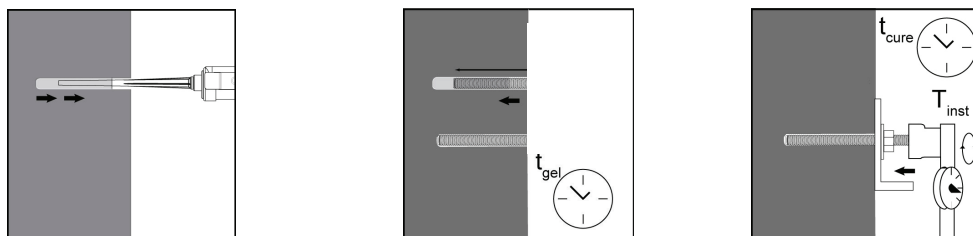
Cleaning with compressed air is suitable for all hole diameters and depths



Blow twice from the back of the drilled hole with oil-free compressed air (min. 6 bar at 6 m<sup>3</sup>/h).  
 Brush twice with the 16mm brush by inserting the brush to the back of the hole in a twisting motion and remove the debris.  
 Blow out again with compressed air at least twice.



Remove the threaded cap from the PRO V200 hybrid resin cartridge.  
 Tightly attach the mixing nozzle.  
 Do not modify the mixer in any way. Make sure the mixing element is inside the mixer.  
 Use only the supplied mixer. Insert the cartridge into the dispenser gun. Discard the initial trigger pulls (10ml) of resin.



Inject the PRO V200 hybrid resin starting at the back of the hole, slowly withdrawing the mixer with each trigger pull.  
 Fill holes approximately 2/3 full, to ensure that the annular gap between the anchor and the asphalt is completely filled with resin along the embedment depth.  
 Before use, verify that the anchor is dry and free of contaminants. Install the anchor to the required embedment depth before the gel working time has elapsed.  
 The working time is shown on the PROV 200 cartridge. The anchor can be loaded after the required curing time.