

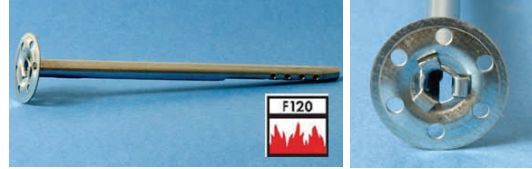
Insulation Fixings

PVMI Steel Insulation Nail

Applications: Soft insulating materials, pressure resistant insulating materials, mineral wools, glass wools wood-wool building slabs

Features

- Fire Resistance Classification F120
- Stainless steel version for outdoor applications
- Use with PVMD metal washer for soft insulating material
- Through fixing

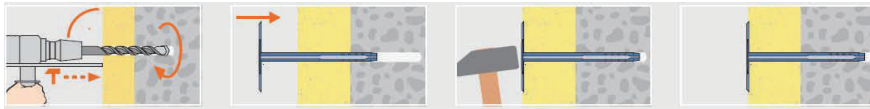


Technical

	Concrete C20/25 Tension load (kN)	Brick Tension load (kN)	Perforated Brick Tension load (kN)	Lightweight Concrete Tension load (kN)
PVMI Steel Insulation Nail	0.3	0.3	0.1	0.1

Safety Factor 3

Installation



Sizes

Steel Insulation Nail

Article Code	Plug and Drill \varnothing mm	Length mm	Head \varnothing mm	Insulation thickness Perforated brick mm	Insulation thickness Concrete mm	Box Quantity
PVMI 80	8	80	30	40	50	250
PVMI 110	8	110	30	70	80	250
PVMI 140	8	140	35	100	110	250
PVMI 170	8	170	35	130	140	250
PVMI 200	8	200	35	160	170	250

Steel Insulation Nail, Stainless Steel A2 / 304

Article Code	Plug and Drill \varnothing mm	Length mm	Head \varnothing mm	Insulation thickness Perforated brick mm	Insulation thickness Concrete mm	Box Quantity
PVMIA2 80	8	80	30	40	50	250
PVMIA2 110	8	110	30	70	80	250
PVMIA2 140	8	140	35	100	110	250
PVMIA2 170	8	170	35	130	140	250
PVMIA2 200	8	200	35	160	170	250

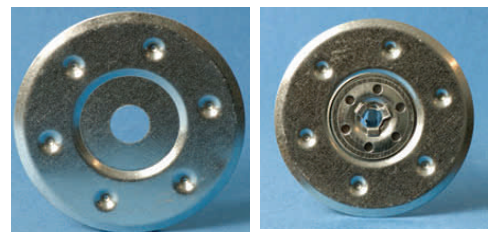
Setting depth: 30mm Concrete, 40mm Perforated Brick

PVMD Metal Washer

Applications: for soft insulating materials

Article Code	Disc \varnothing mm	Hole \varnothing mm	Description	Box Quantity
PVMD 80	80	14.5	Zinc plated	250
PVMDA2 80	80	14.5	Stainless steel A2	250

To be used with the PVMI / PVMIA2 Steel Insulation Nail

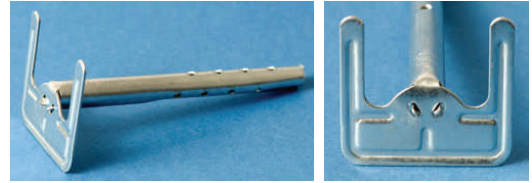


PVMIH Steel Insulation Nail

Applications: Soft insulating materials, pressure resistant insulating materials, mineral wools, glass wools wood-wool building slabs

Features

- Fire Resistance Classification F120
- Stainless steel version for outdoor applications
- Use with PVMD metal washer for soft insulating material
- Through fixing



Technical

	Concrete C20/25 Tension load (kN)		Perforated Brick Tension load (kN)	Lightweight Concrete Tension load (kN)
PVMIH Steel Insulation Nail	1.0		0.1	0.1

Installation



Sizes

Steel Insulation Nail

Article Code	Plug and Drill \varnothing mm	Length mm	Head \varnothing mm	Insulation thickness Perforated brick mm	Insulation thickness Concrete mm	Box Quantity
PVMI 80	8	80	30	40	50	250
PVMI 110	8	110	30	70	80	250
PVMI 140	8	140	35	100	110	250
PVMI 170	8	170	35	130	140	250
PVMI 200	8	200	35	160	170	250

Steel Insulation Nail, Stainless Steel A2 /304

Article Code	Plug and Drill \varnothing mm	Length mm	Head \varnothing mm	Insulation thickness Perforated brick mm	Insulation thickness Concrete mm	Box Quantity
PVMIA2 80	8	80	30	40	50	250
PVMIA2 110	8	110	30	70	80	250
PVMIA2 140	8	140	35	100	110	250
PVMIA2 170	8	170	35	130	140	250
PVMIA2 200	8	200	35	160	170	250

Setting depth: 30mm Concrete, 40mm Perforated Brick

PVMD Metal Washer

Applications: for soft insulating materials

Article Code	Disc \varnothing mm	Hole \varnothing mm	Description	Box Quantity
PVMDH 80	80	14.5	Zinc plated	250
PVMDHA2 80	80	14.5	Stainless steel A2	250



To be used with the PVMIH / PVMIA2 Steel Insulation

Insulation Fixings

PVPNI Insulation Fixing, with nail

Applications: Polyurethane rigid foam panels, polystyrenes and mineral wools, pressure resistant insulating materials

Features

- With glass fibre reinforced plastic pin
- Stable against influences of the weather
- Resistant to cold and heat
- Use with PVPD polypropylene washer for soft insulation material
- Through fixing



Technical

	Concrete C20/25 Tension load (kN)	Perforated Brick Tension load (kN)	Lightweight Concrete Tension load (kN)
PVPNI Insulation fixing, with pin	0.25	0.2	0.15

Safety Factor 3

Installation



Sizes

Article Code	Plug and Drill Ø mm	Length mm	Head Ø mm	Insulation thickness Perforated brick mm	Insulation thickness Concrete mm	Box Quantity
PVPNI 70	10	70	50	30	40	250
PVPNI 90	10	90	50	50	60	250
PVPIN 110	10	110	50	70	80	250
PVPNI 130	10	130	50	90	100	250
PVPNI 150	10	150	50	110	120	250
PVPNI 180	10	180	50	140	150	250
PVPNI 210	10	210	50	170	180	250

Setting depth: 30mm Concrete, 40mm Perforated Brick
Special orders: Lengths up to 300mm are available upon request

PVPD Polypropylene Washer

Applications: for soft insulating materials

Article Code	Disc Ø mm	Box Quantity
PVPD 90	90	250



To be used with the PVPNI Insulation Fixing, with nail

Insulation Fixings

PVPI Insulation Fixing for mineral wool

Applications: Polyurethane rigid foam panels, pressure resistant insulating materials, mineral wools, polystyrenes

Features

- No reduction of insulation level
- Material is shock resistant
- Reduced assembling time, without screws and nails
- Through fixing

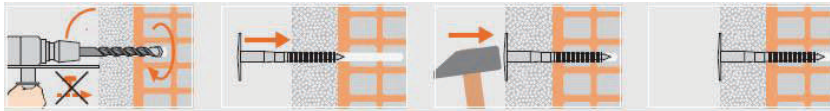


Technical

	Concrete C20/25 Tension load (kN)	Brick Tension load (kN)	Perforated Brick Tension load (kN)	Lightweight Concrete Tension load (kN)
PVPI Polypropylene insulation fixing	0.15	0.15	0.13	0.12

Safety Factor 3

Installation



Sizes

Article Code	Plug and Drill \varnothing mm	Length mm	Head \varnothing mm	Insulation thickness Perforated brick mm	Insulation thickness Concrete mm	Box Quantity
PVPI 70	8	70	45	30	40	250
PVPI 90	8	90	45	50	60	250
PVPI 105	8	105	45	65	75	250
PVPI 125	8	125	45	85	95	250
PVPI 155	8	155	45	115	125	250

Special orders: Lengths up to 300mm are available upon request
Setting depth: 30mm Concrete, 40mm Perforated Brick

PVP Insulation Plug

Applications: for PVPI and PVPLI in perforated brick



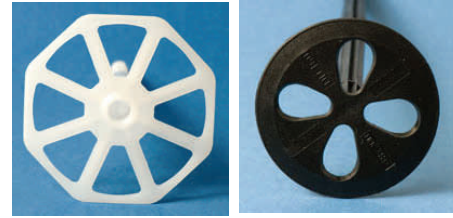
Article Code	Plug and Drill \varnothing mm	Length mm	Box Quantity
PVP	12	60	100

PVPLI Insulation Fixing for lightweight panel

Applications: soft insulating materials, glass wools, wood-wool building slabs, mineral wools

Features

- Large star shaped plug head for soft insulation boards
- No reduction of insulation level
- Material is shock resistant
- Reduced assembling time, without screws and nails
- Through fixing

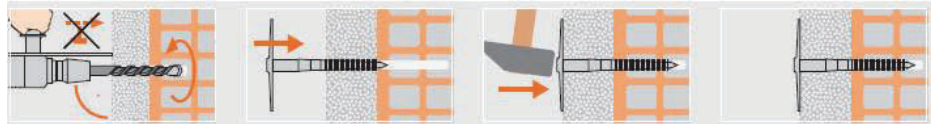


Technical

	Concrete C20/25 Tension load (kN)	Brick Tension load (kN)	Perforated Brick Tension load (kN)	Lightweight Concrete Tension load (kN)
PVPLI Polypropylene insulation fixing	0.15	0.15	0.13	0.12

Safety Factor 3

Installation



Sizes



PVPLI Insulation fixing for lightweight panel, \varnothing 88mm

Article Code	Plug and Drill \varnothing mm	Length mm	Head \varnothing mm	Insulation thickness Perforated brick mm	Insulation thickness Concrete mm	Box Quantity
PVPLI 75	8	75	88	35	45	250
PVPLI 95	8	95	88	55	65	250
PVPLI 115	8	115	88	75	85	250
PVPLI 135	8	135	88	95	105	200
PVPLI 155	8	155	88	115	125	200



PVPLI Insulation fixing for lightweight panel in black, \varnothing 60mm

Article Code	Plug and Drill \varnothing mm	Length mm	Head \varnothing mm	Insulation thickness Perforated brick mm	Insulation thickness Concrete mm	Box Quantity
PVPLI 180	8	180	60	140	150	100
PVPLI 200	8	200	60	160	170	100

Setting depth: 30mm Concrete, 40mm Perforated Brick

PVP Insulation Plug

Applications: for PVPLI and PVPI in perforated brick



Article Code	Plug and Drill \varnothing mm	Length mm	Box Quantity	Box Quantity
PVP	12	60	100	100